



in this issue

PROJECT NEWS

| | |
|-----------------------------------|----|
| President's Letter | 2 |
| Food Industry News: | |
| Vicom | 3 |
| Johnsonville | 3 |
| Refining Industry News: | |
| Flint Hills | 4 |
| Clean Fuels Project | 4 |
| Power Industry News: | |
| Gas Technology Institute | 5 |
| Liquefied Natural Gas | 6 |
| Amaren/UE. | 6 |
| Meramec | 7 |
| Renewable Fuel News: | |
| Int. Fuel Ethanol Workshp. | 8 |
| Lavalin Biomass | 8 |
| "Turkey Burner" | 9 |
| Utica | 9 |
| Broin Ethanol | 9 |
| STS on the Move | 10 |
| SMWC Fab Shop | 10 |
| Health Care Industry News: | |
| Advocate Health Care | 11 |
| St. Francis Hospital | 11 |
| NFPA Certification | 11 |

SAFETY NEWS

| | |
|-----------------------|----|
| NMAPC Award | 12 |
| Scheck Employee Saves | 12 |
| Scheck's EMR Drops | 12 |
| SMC MI Spreads Cheer | 12 |

EMPLOYEE NEWS

| | |
|--------------------|----|
| "Murph" Comes Home | 13 |
| Photos From 2006 | 13 |
| Scheck and Bowyer | 14 |
| Toys for Toys | 14 |
| Thanks a Million | 15 |

SIGN UP FOR SCHECKSCOPE!

www.GoScheck.com

In The News

Get Scheck News!

Scheck Industrial Powers its Way to the Top

Under the direction of Steve Beam, Scheck Industrial Corporation (SIC) has seen tremendous growth and success over the last two years. A national leader in providing steel to stack boiler solutions—SIC employs as many as 10 percent of the nation's Union boiler-makers. Scheck Industrial has recently completed critical outages at several power plants, and is playing an integral role in the construction of a one-of-a-kind biomass-fuelled power plant in Minnesota. Look inside this issue of Scheck Scope to learn more about SIC's exciting projects and accomplishments.



SIC works in power plants throughout the U.S.

STS on the Move



STS worked in numerous ethanol plants in 2006

Scheck Technical Services is a full service instrumentation contractor specializing in process control instrumentation. Under the direction of Russ Pritchett, an original Scheck employee, STS is one of the nation's largest employers of union instrumentation technicians.

Continued on Page 10

Service Team Creating Sweet Opportunities



An industrial refrigeration project at Vicorp

Scheck Mechanical's Chicago Service Division continues to grow and increase its capabilities, and is currently working on projects in two of Chicago's premier food production facilities. Scheck has a long history in the food industry, and has completed major construction projects and performed plant maintenance operations for food industry clients nationwide.

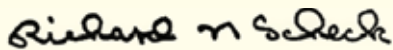
Continued on Page 3

From the President...

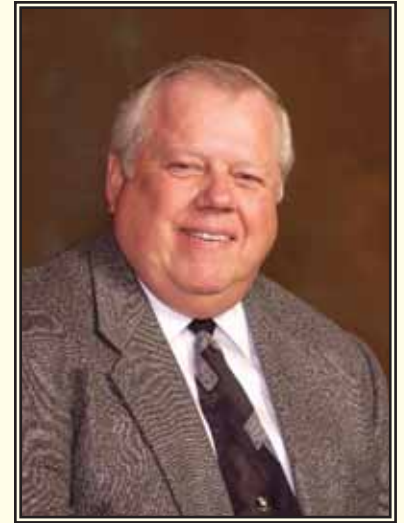
A Letter from the President

As we enter 2007, I am very excited to see all of the upcoming heavy industrial projects that will be taking place this year. The Power, Refining, Renewable Fuel, Food and Service Industries will be booming. As this happens, the Contractors that can furnish the most qualified supervision and trades people will be in great demand—This means Scheck! We have the reputation of furnishing the most qualified people and manpower for every project in some of the most difficult labor areas in the country; even when others can not. We are very proud of that reputation and the trades people that have worked hard to help us earn that distinction. We look forward to a great 2007 and a great future for all of the Scheck companies. We know that customer satisfaction is the number one priority at Scheck, and we will always maintain that commitment.

Sincerely,



Richard Scheck



Rich Scheck thanks Illinois Secretary of State, Jesse White, and the Jesse White Tumblers, for participating in the 2006 Betty Scheck Walk for Cancer



FOOD INDUSTRY NEWS PAGE

Service Team Creating Sweet Opportunities

Outstanding performance on several recent emergency service and piping repair projects has led to new opportunities at two Chicago area sites. Nestle's Baby Ruth and Butterfinger plant has utilized SMC's service and construction expertise. Recent projects have included emergency piping repairs on the cooling tower and installation of a new air handling unit for the peanut roasting room. Scheck is also performing the utility and process piping reroutes for the installation of a new production line. The new product is set to be introduced in early 2007.

Scheck's service team also opened the door for a major refrigeration project at one of Vicorp's local production plants. After proving itself on emergency opportunities during the peak summer heat, SMC was awarded a contract to install a new refrigeration system for the Cream Room cooler. The Vicorp facility is the pie production site for all Baker's Square and Village Inn restaurants. Pies are also produced for Bob Evans restaurants, and several retail outlets. The project will be completed in early 2007.

Scheck has cemented its position as a leader for Chicago's food industry with the addition of an experienced ammonia refrigeration service technician, and a piping supervisor with more than 25 years food industry experience. The service team also continues to be a leader in the educational and institutional arenas. Service manager, Ron Wintercorn's team continues to be the top choice for Chicago Public Schools' 591 facilities. In addition to emergency service, Scheck was also awarded a major piping installation project at the Jones College Prep, in downtown Chicago. The service team has also added a technician with 20+ years of experience, who specializes in chillers and direct digital control systems (DDC). Special thanks to field supervisor, Dan McLernon, and the rest of the service team for their commitment to our customers during the hot summer months.

Scheck's efforts helped Vicom ship almost one million pumpkin pies in the three days before Thanksgiving



Scheck "Meats" Customer's Needs

Johnsonville Sausage is America's #1 brand, and Illinois is the home to Johnsonville's largest production facility. Every day, up to 1,600 sows are processed to make a variety of Johnsonville's famous sausage and bratwurst. As the nation's premier sausage brand, Johnsonville's commitment to product quality is evidenced by their pristine facility. Nightly clean-up and maintenance is one of the most critical elements to keeping the plant running. Hot water and steam are utilized throughout the plant, and system downtime is not an option. Scheck Mechanical was called upon for the critical replacement of the process steam deaerator system. Under the direction of Brian Ortiz and Brian Harris, Scheck Mechanical's Field Team of Dave Barker, Brian Wolke, Bill Boyd and John Cook mobilized on a Friday evening. The team worked extended shifts to complete the installation and ensure that all systems were properly operating by Sunday afternoon. The plant was back on line with time to spare, and plant maintenance personnel were able to resume their processes without missing a single shift. Special Thanks to the maintenance team at Johnsonville for their excellent coordination and assistance in the project. Scheck's capabilities will soon be put to the test again, with an ammonia piping and vessel replacement job scheduled for early spring.



REFINING INDUSTRY NEWS

STS Completes Diesel Project in Minnesota

Scheck Technical Services has successfully completed the instrumentation package for a new ultra-low-sulfur diesel unit at a Flint Hills Resources Refinery in Minnesota. STS's scope included taking care, custody and control of over 3500 tagged items, and the bench calibration, installation, and loop checks for all project requirements associated with the new unit. Faced with a near impossible schedule, Scheck's group of experienced technicians and qualified installers came through with an on-time/on-budget completion under the leadership of Ken Meier, Site Superintendent and William Stanaslowski, Lead Technician for STS. This project had a perfect safety record without a single incident. STS also received a letter of appreciation from Jacobs Constructors for their efforts.

FHR's Pine Bend Refinery is the largest heavy crude processing facility in the world, converting 280,000 barrels of crude oil into 10 million gallons of petroleum products, daily. FHR has become a leader in producing cleaner burning and environmentally friendly products, and has counted on STS for preventative maintenance and capital improvement support since 2001. With a consistent work force of instrumentation and control technicians on site, STS maintains a steady presence at the facility. The team has recently been increased to support an upcoming turnaround project.



STS Wraps up Clean Fuels Job in Jersey



Scheck Technical Services recently completed their portion of the Clean Fuels Project in a major East coast refinery. One of Scheck's senior instrument supervisors, Mike Arends was assigned to work direct for the refinery to provide construction management support for the electrical and instrumentation group. Mike's responsibilities included monitoring construction progress and quality control and assurance for the E&I subcontractors. Mike also coordinated all loop check, start-up and commissioning activities. The scope of work encompassed many operating units, a new hydrogen unit, and safety was a serious concern. The project was successfully completed without a single incident.

POWER AND GAS INDUSTRY NEWS

SMC Does Some Heavy Liftin'

Gas Technology Institute called upon Scheck Mechanical for a critical portion of its recent Flex Fuel Testing Facility expansion. The highlight of the project was the erection of a 50-ton module (the AGTPP) which will be used with many different solvents for removal of acid gas components from coal gasification synthesis gas. The FFTF was designed and built to test advanced fuel gasification technologies for the coming decade. This addition will greatly enhance the capabilities of the FFTF and facilitate the



mission of making coal gasification technologies more competitive in the marketplace.

GTI Senior Engineer, Raj Palla stated, "Scheck Mechanical has helped GTI achieve its goal. They carefully planned and facilitated the critical operation of installing the AGTPP module. We're very pleased with the performance of Scheck!" The project was supervised by Joe Rivera, with the help of Local 597 members Steve Fawbush, Chuck Weber, Judd Sage, Dan Eble, and Pete Meier.



POWER AND GAS INDUSTRY NEWS



LNG is brought to the U.S. by tanker ships

Scheck Industrial Completes Major Outage

Scheck Industrial Corporation completed the spring 2006 outage for Unit #2 at the Ameren/UE, Portage de Sioux Power Station. SIC performed work related to environmental enhancements of the low NOx system and installation of the overfire air. Additional work included the char hopper, gas recirculating duct, penthouse, furnace maintenance, air heater maintenance and the repair of two (2) fields of collector plates and discharge electrodes in the electrostatic precipitator.

Thanks to the tremendous efforts of the Local Union Boilermakers on the project, Scheck Industrial completed over 50,000 man-hours during the four week outage finishing early with zero accidents and zero rejects on over 1200 code welds with 100% x-ray requirements.

STS Not Left Out in the Cold

Liquefied Natural Gas (LNG) is natural gas that has been cooled to a temperature of about -260 degrees Fahrenheit. It is imported to the U.S. by tanker, and stored in double-walled tanks that maintain a constant temperature and pressure to keep the gas in a liquid state. When Chicago Bridge and Iron was selected by Yankee Gas to construct a 1.2 billion cubic foot LNG storage tank in Waterbury, Connecticut, it wasn't long before CBI called on old friend, STS, to complete the complex instrumentation package. The purpose of the project is to allow Yankee Gas greater flexibility and security of its gas supply. Yankee Gas can purchase supplies during summer months when price and demand are typically lower. This project will allow the company to store greater reserves of fuel to meet the higher demand for gas during the coldest winter months, while keeping natural gas prices stable for customers. The plant is on schedule to be in full service for the 2007-2008 heating season.

SIC had multiple projects in Missouri and Southern Illinois in 2006

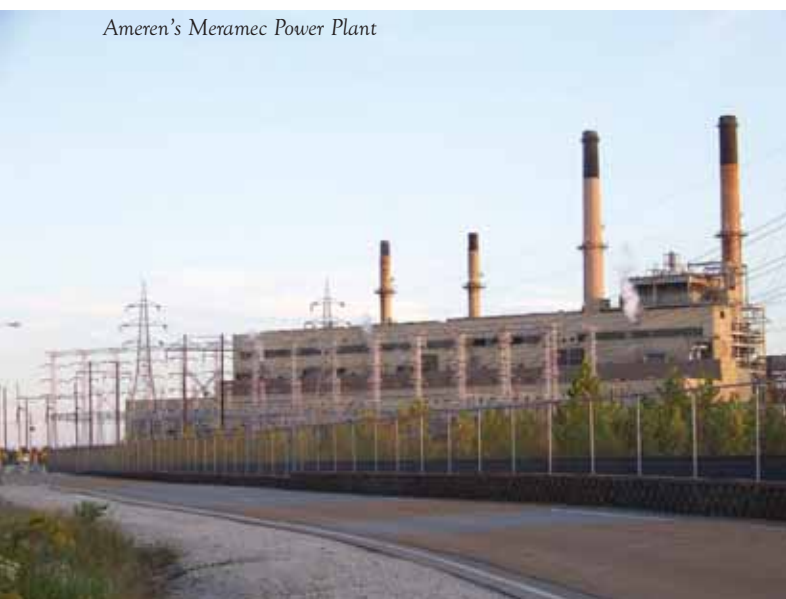


POWER AND GAS INDUSTRY NEWS

SIC Exceeds Expectations at Meramec

Scheck Industrial Corporation recently completed four major projects for AmerenUE at its Meramec plant during the Unit 3 Fall 2006 outage. The four projects included installation of an overfire air system and 24 new low NOx burners on both the superheat and reheat boilers; rear wall casing and refractory replacement on both boilers; general boiler maintenance and general precipitator maintenance. Unit 3 at the Meramec Plant is a 350MW, coal-fired, Foster Wheeler-designed, twin-furnace boiler. The plant was built in 1967 and currently burns low-sulfur western coal.

Ameren's Meramec Power Plant



The new low NOx burners and overfire air systems were designed and furnished by Advanced Combustion Technologies, Inc. and installed by Scheck Industrial during what was planned to be an eight week outage. Prior to the outage start, the time frame was reduced to six weeks. An individual overfire air system and 12 burners were installed on each furnace. Scheck mobilized early and performed a significant amount of work on the overfire air systems pre-outage. This allowed Scheck to finish all of its work eight days early during the now six week outage.

In addition, Scheck Industrial replaced the rear furnace wall on each of the two boilers working directly for AmerenUE. Old casing, buckstays and refractory were removed and replaced with new, including a high performance refractory system. The existing soot blower mounts were modified. Scheck Industrial also performed extensive maintenance on

the boiler including windbox repairs, replacement of damaged waterwall, superheat and reheat tubes, replacement of tube tiebacks and other internal tube supports and guides, repair of major casing "hot spots" and extensive tube shield replacements. Away from the boilers, Scheck Industrial performed extensive maintenance and repair of the precipitator internals. All of this work was performed during the six week outage time frame and completed eight days early.

Scheduling was dynamic. AmerenUE's Generation Construction & Maintenance Services Group developed an integrated project schedule for all of the outage work. Each contractor was responsible for preparing and maintaining subproject schedules covering its portion of the work. AmerenUE furnished each contractor with computers that allowed access into the contractor's portion of the integrated project schedule. Schedules for each of SIC's four projects were developed then maintained daily. Scheck was able to monitor all of its activities on a continuous basis reallocating manpower as needed. As a result, Scheck was never on "critical path" even though it performed the majority of the Unit 3 outage work.

SIC's workforce peaked at a total of 255 craftsmen on two shifts during the outage. Work performed required more than 70,000 craft man-hours, primarily boilermakers from Boilermaker Local 27 of St. Louis, Missouri.

A Scheck Boilermaker Heats Things Up



RENEWABLE FUEL INDUSTRY NEWS

Scheck at the Forefront of Renewable Fuel Industry

With the price of oil skyrocketing due to high demand and unrest in the middle-east, the already booming ethanol industry has seen unprecedented growth. This was evidenced by the amazing turnout at the 2006 International Fuel Ethanol Workshop which was held in Milwaukee, Wisconsin. Over 3,320 people from 36 countries, including 774 current and future ethanol producers attended the EXPO which featured over 350 exhibitors.

Scheck Industries played a major role in the success of the week long event. As the proud sponsor of the annual golf outing which was held at Brown Deer Park Golf Course, Scheck welcomed conference attendees to Milwaukee. The beautiful PGA tour stop provided the perfect setting, and the weather could not have been better. To add excitement to the outing, Scheck sponsored a hole in one, which featured the possibility of winning a brand new 2006 E-85 Chevy Avalanche.

Scheck also proved to be a leader on the show floor. As the only experienced mechanical contractor exhibiting at the show, Scheck's booth was overwhelmed by attendees seeking information about their piping, fabrication, instrumentation and boiler capabilities. In the morning conferences, many of the leading ethanol constructors stressed the need for quality labor as more plants are built in pro-union areas, east of the Mississippi. With the help of the Wisconsin Pipe Trades, who were also exhibiting at the show, Scheck helped to spread the word about the importance of using highly skilled, trained union labor. An Ethanol plant is a multi-million-dollar investment, and the mechanical system is the heart of the process. Quality installation is key to the longevity of the plant, and to prevent costly down time.

The Scheck team included Michael Scheck, Vice President of Business Development; Terry Hodous, Purchasing Manager; Brian Ortiz, Project Executive; Dave Arends, Project Manager; Larry Seidl, Manager-Pipe Fabrication; Lee Schmidt, Manager-Process Module Fabrication. Special thanks to Wendy Stewart, Michelle Meinberg and Tammy Fuller from BBI International for assisting the Scheck Team in making the show a tremendous success.



Mike Scheck and Expo Director Wendy Stewart

STS Awarded Prime Instrumentation Package on Biomass Project

STS has joined its sister company, Scheck Industrial Corporation, at SNC-Lavalin's Fibrominn Biomass project. Parsons Electric, based in Minneapolis, MN will be subcontracted by STS to complete the electrical portion of the instrumentation package.

Mobilization occurred in the fall. Eddie Scheck, site manager, and Ken Meier, site superintendent, will lead Scheck's on-site team. The project scope includes all of the instrument installation, wiring, calibration and loop check at the Fibrominn Plant.



Scheck sponsored a 2006 E-85 Chevy Avalanche for a Hole in One Prize

RENEWABLE FUEL INDUSTRY NEWS

SIC Builds Nation's First "Turkey Burner"

Scheck Industrial Corporation is in the final stages of the construction of a mixed biomass fueled boiler system for Fibrominn LLC of Minnesota. This particular unit is designed to burn turkey waste as its primary fuel source.

SNC-Lavalin Thermal Power provided engineering and construction management, and SIC was chosen as the prime contractor performing the construction from the steel to the stack including all boilermaker, ironworker, and significant amounts of millwright and piping work. The unit, a Foster Wheeler Ltd. Biomass Detroit stoker boiler is the largest of its kind in the world and the first of its kind to be constructed in the United States.

Scheck Industrial also installed the 55 megawatt Fugro supplied turbine/generator. The turbine generator was installed by SIC using direct hired labor supervised by SIC supervision. The back-end work included a Hammond/Research-Cottrell scrubber and bag house system. The breeching support steel was also a part of this package. Other equipment that was constructed by SIC includes the water treatment plant, the fuel conveying system and the GEAC air cooled condenser. The work on the control system was performed by sister company Scheck Technical Services (STS).



This project fell under the terms of a project labor agreement (PLA) with all parties being required to become signatory to the agreement. Falling under the terms of a PLA, all labor on site was performed by union craftspeople. The cooperation from all crafts and the SIC management team will assure a successful, on-time completion.

STS to Work on Multiple New Ethanol Plants

STS has been contracted by Broin & Associates to assist in the start up and commissioning of ethanol plants in various locations throughout the Midwest. Broin & Associates is an international leader in the booming renewable fuel industry, providing comprehensive, turnkey dry mill ethanol plant and biorefinery design, engineering, and construction services. The first four plant locations include Ladonia, Missouri, Mitchell, South Dakota, Preston, Minnesota, and Big Stone City, South Dakota. The STS team of Instrument Technicians will be led by Mike Arends.



Utica Energy in Osh Kosh, WI

SMWC Growing With Utica

With the increased demand for Ethanol in the U.S. to meet stricter governmental air quality standards, Scheck's expertise has been in major demand. With over 22 years of experience in the wet and dry milling industries, the team has been busy fielding new opportunities in this booming industry. The emerging technologies associated with the by-products of the ethanol refining process have led to expansion at many of Scheck's existing customer's facilities. Scheck Mechanical Wisconsin Corporation (SMWC) is in the process of installing a cooling tower, chiller, pumps and related piping for the new CO2 plant located at the ethanol refinery owned by Utica Energy, in Osh Kosh, Wisconsin. After completing construction on the initial plant, SMWC's team has maintained a steady presence on site by providing the ongoing maintenance work. With upcoming construction plans for a digester plant and planned construction of a new biodiesel plant, the Scheck team will be busy with pipe fabrication and installation on these exciting projects.

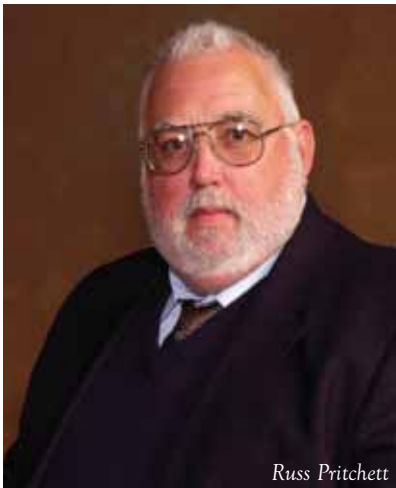
RENEWABLE FUEL INDUSTRY NEWS

STS on the Move

Continued from Cover

The management team is proud to have over 500 years of hands on experience in the instrumentation field, and have worked on projects in all parts of the United States. In fact, STS has been the key contributing factor in the nation wide growth of Scheck Industries. Many of the largest projects, and longest customer relationships in Scheck's history, started as a result of an instrumentation project that has handled by STS. Russ states that "Our M.O. has always been that we'll take on any project, anywhere!" That attitude and willingness to pursue opportunities that others may have passed on, has helped STS climb to the top of the instrumentation field.

STS provides plant maintenance contracts, supplemental assistance in outages, turn arounds, start-ups and commissioning. They have worked in refining, nuclear power, food processing, chemical, petro-chemical, co-generation, pulp and paper, pharmaceutical, utilities, automotive, aerospace, and air separation facilities. STS remains on the cutting edge of technology, working on numerous recent projects in the renewable fuel industry.



Russ Pritchett

The Scheck Technical Services team is made up of members of the United Association of Plumbers and Pipefitters and the International Brotherhood of Electrical Workers. President Richard Scheck is a founding member of the Instrument Contracting and Engineering Association (ICEA). Additionally, STS is signatory to the National Instrument Agreement for Certified Control Instrument Technicians. The STS team is always on the move, with current projects located across the country.



SMWC OPENS NEW FAB SHOP

Scheck Mechanical Wisconsin Corporation is in the final stage of moving its fabrication facility. The new 100,000+ sq ft facility is equipped with (2) 15 ton and (2) 4 ton overhead cranes that are already being used extensively for heavy lifts.

The team has been busy with fabrication for the ethanol, refining, and pulp and paper industries. SMWC is also in the process of fabricating 60 ton modular piping skids which are to be shipped overseas for one of Scheck's International Customers.

SMWC's field work forces are installing all of the carbon steel piping at a Green Bay Petroleum storage facility, and they are in the final stages of a piping project located at Western Lime in upper Michigan. Scheck will have installed all of the process and utility piping at this plant when completed.

Scheck's State of the Art Fabrication Facility



HEALTH CARE INDUSTRY NEWS

Innovative Imaging Center Complete

Scheck Mechanical recently completed work on Advocate Health Care's new imaging center in Wilmette, Illinois. This project will serve as the home to MRI, X-Ray, CT Scan, mammography, DexaScan, and ultrasound equipment. The facility contains special ambient features, such as fiber-optic living walls, wall-and-ceiling theater projections, and advanced digital surround-sound. Work scope includes complete mechanical demolition, installation of a 25-ton roof top unit, chiller, electric VAV's, finned tube radiation, unit heaters, humidifiers, and new ductwork. This first-of-its-kind facility will serve as a model for similar imaging centers throughout the world, and will be featured in the Spring issue of a leading European health-care publication.

MRI Unit at Wilmette Imaging Center



Air-cooled Chiller for the MRI



Hospital Project Completed

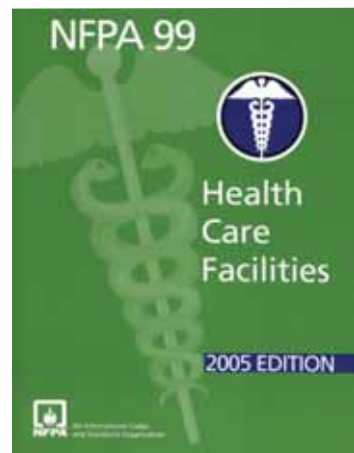
Scheck Mechanical's health care team recently completed a project at St. Francis Hospital and Health Center in Blue Island, IL. St. Francis is a 410-bed Catholic, voluntary, not-for-profit health care institution, owned and operated by SSM Health Care, one of the nation's largest Catholic health care systems. Founded in 1905 by the Sisters of St. Mary, St. Francis is an acute-care hospital providing primary, secondary and tertiary levels of care.

The project consisted of a major renovation to the EP lab and radiology holding areas of the hospital. Scheck's scope of work was to provide new heating, cooling and medical gas piping, and install a new air handling unit in a mechanical room that did not have easy access. The new unit was shipped in several pieces, and reassembled in place. Despite an aggressive four month schedule, and the challenges of working in an occupied hospital, the Scheck team received rave reviews for the performance from construction manager M.A. Mortenson Company, and hospital facilities personnel.



HEALTH CARE TEAM ATTAINS CERTIFICATION

A team of Supervisors from Scheck Mechanical's Countryside, IL office recently received their certification for completing Pipe Fitter Local 597's Advanced Journeyman Course in Medical Gas Installation as per NFPA-99. The course which includes classroom work and practical lab experience in Local 597's state of the art medical gas laboratory is designed to familiarize students in the latest rules and techniques to maximize safety in all types of health care facilities. Continuing developments in medical equipment and processes create new opportunities for improved health care delivery, as well as new methods to mitigate fire, explosion, and electrical hazards. The 2005 *NFPA 99: Health Care Facilities* has been completely updated to present rules for the safe application of electrical systems, gas and vacuum systems, environment systems, materials and emergency management practices. At the end of the course, students must pass a written test of the NFPA 99 code book, and a practical welding exam in the laboratory. Congratulations to: Bill Boyd, Dan Eble, Mike Martin, Dennis Moldenhauer, and Tom Powers for successfully receiving their certification.



SAFETY NEWS

NMAPC Award Given To Scheck

Scheck Mechanical is proud to announce that it recently received one of the most prestigious safety awards in the industry—The National Maintenance Agreements Policy Committee's Zero Injury Safety Award. This program was designed to recognize world-class safety. Richard Scheck, President, Chris Scheck, Special Operations Manager, and Bob Hite, National Labor Relations Manager received the award on behalf of Scheck Mechanical on Thursday, October 26, on Capitol Hill in Washington D.C. Scheck was selected to receive this award for their zero-incident performance on the clean fuels project at a major refinery in Linden, New Jersey. A total of 207,177 man hours were worked on this job, with no lost time incidents. Only seven of these awards were given out nationally, and Scheck is proud of the performance of their management team, the tradespeople of the Union County Building Trades, as well as the project owner's commitment to safety.

Scheck Receives the Prestigious 2006 NMAPC Award in Washington D.C.



Scheck's Low EMR Drops Again

Scheck Industries' safety culture is not one that allows for small bumps in the road or shortfalls in communication. This culture has and continues to aid us in our pursuit of project safety excellence, and has allowed Scheck to remain the benchmark for contractor safety performance. Scheck is very proud of the performance of their employees and their latest published EMR of 0.59, down from 0.63 for the previous year.

Scheck would like to offer its congratulations and appreciation to its employees for the wonderful safety performance they have worked so hard to achieve. Scheck is committed to achieving ZERO accidents in the workplace, and hitting that goal is everyone's job.

Scheck Employee Saves a Life

On November 30th, 2006, Scheck Employee Corey Barrett put his safety skills to use to save a life. While on lunch break at a local restaurant, he heard a commotion from the men's restroom, and a call for help. Corey quickly ran to the restroom, and found an unconscious man in the stall. He picked the man up, and laid him on the floor outside of the stall. The young man had apparently overdosed on a chemical substance. After calling for an ambulance, Corey performed CPR on the victim, with the assistance of the victim's friend. Corey continued with the compressions as the friend performed rescue breathing under Corey's supervision. The ambulance arrived within ten minutes, and the person regained consciousness. Congratulations to Corey on his act of heroism, and for being able to apply his skills to save a life!



Frank Viso Pulls the Christmas Carol Float

SMC Michigan Spreads Holiday Cheer

Scheck Mechanical's Michigan office built a float for this year's Battle Creek Holiday Parade. The parade had an international theme, so the team built a float based upon Charles Dickens' classic, A Christmas Carol.

NEW EMPLOYEE NEWS

“Murph” Comes Home

Scheck Industries has become a leader in the refining industry, and has made another outstanding “re-addition” to its management team. Jim Murphy has rejoined the Scheck team as Manager of Project Services. Jim recently retired from CITGO Petroleum Refining in Lemont, IL where he spent the last 15 years as a leader in maintenance and capital planning. Positions held during that time period were turnaround and slowdown manager, maintenance and capital construction planning supervisor, senior planner and SAP heavy craft gatekeeper, capital construction coordinator, maintenance heavy craft technical coordinator, maintenance zone coordinator, maintenance cracking/utilities/sulfur area planner, and interim maintenance manager during the crude unit fire rebuild.

Prior to his time at CITGO, Jim spent 25 years as a member of Local Union #597 working with computer-based project management systems, welding and quality assurance/control, non-destructive testing related to nuclear and fossil power generation, petroleum refining and chemical and food processing. Jim held the following positions with contracting firms, including Scheck Mechanical prior to joining CITGO:

- Superintendent of Welding and Quality Control
- Site Quality Assurance Manager
- Superintendent of Welding and Quality Control
- Assistant Corporate Quality Assurance Manager
- Corporate Welding and Quality Manager
- Quality Assurance Manager and Welding Consultant / Project Manager
- President/Owner: Independent Welding and Quality Systems
- Quality Control Superintendent
- Quality Systems Auditor and Vender Surveillance Lead Auditor
- Assistant Corporate Welding Engineer and Welding Superintendent



Manager of Project Services, Jim Murphy



Jim Utilizes Scheck Trac for Complex Project Management

- Quality Control inspector Level I, II, and III
- Pipefitter/Certified Welder
- Pipefitter Apprentice



Scheck Employees and Friends Enjoyed the 2006 Chicago Air and Water Show



Scheck sponsored two Hole in One Hummers at the Local 143 Golf Outing

Cristina Villareal and Donna Mills won Best Bears Gear



The Countryside, IL office enjoyed the Chicago Bears Super Bowl Season



Scheck Teams with RCR's Bowyer

Scheck Industries has signed Richard Childress Racing's (RCR) Clint Bowyer to a personal services agreement. The former NASCAR Nextel Cup Rookie of the Year will serve as a spokesperson for the Scheck Industries group of companies, which includes Scheck Mechanical Corporation, Scheck Mechanical Wisconsin Corporation, Scheck Industrial Corporation, and Scheck Technical Services.

Bowyer joined the Scheck Tailgate Party at this summer's Nextel Cup Races in Joliet, IL to sign autographs and meet Scheck employees and friends in attendance. Scheck's guests also enjoyed amazing access to RCR's garage, pit stop area, and race control center. Additionally, Scheck was featured on the Speed Channel's weekly program, "Seven Days". Bowyer was filmed while attending Scheck Industries' annual operations meeting in Chicago.



Clint Bowyer Shares an Inspirational Safety Message



TOYS FOR TOTS

Scheck Industries 2006 holiday party once again served as a toy drive for the Toys for Tots charity program. All Scheck party attendees brought a wrapped children's toy to the party. Several hundred wonderful toys were donated, no doubt bringing smiles to the faces of many underprivileged children this holiday season.

Thanks a Million!

WE SALUTE ALL THOSE INDIVIDUALS, BUSINESSES, THOSE FIGHTING CANCER AND THOSE CANCER SURVIVORS FOR BELIEVING WE CAN MAKE A DIFFERENCE

It was an extremely hot day for those who participated but several very cool things happened at the 8th annual Betty Scheck Memorial Walk for Cancer held Saturday, July 29th at the Village Commons in North Riverside, IL. The Loyola University Medical Center Lifestar helicopter made a picture-perfect landing in Commons Park giving everyone an opportunity to view the air service that is operational 24/7 and ready to respond to the critically ill and injured requiring transport. Also wowing the crowd and showing his continued and extraordinary support of the event was Secretary of State Jesse White and the Tumblers. The final highlight of this year's Walk came after the event—the achievement of raising more than \$1 million over the past eight years. “This is an incredible accomplishment for all of those involved. It’s an astounding amount of money for a small village,” said co-Chair Rick Scheck of the feat. “We are grateful to our participants and corporate sponsors for their generosity and I am especially grateful to co-chair Charmaine Kutt, who always puts this event and the welfare of others before herself. I look up to her not only as a survivor but as a remarkable person who is constantly looking out for the best interests of North Riverside and the American Cancer Society. Seeing more and more survivors each year at the event is what makes a difference to all of us in the Scheck family, particularly as the event is named for my mom. Survival rates and programs that benefit those in need have been impacted by the generosity of many people. Raising more than \$1 million says a lot about Mayor Richard Scheck, the Village Board and the people of this great community.”

“The children who participate in the Betty Scheck Walk for Cancer understand the value of supporting a cause that makes a difference and they are learning the right approach to giving back.”

—Rick Scheck



Mom and Dad can do all the walkin’



Loyola Medical Center's Lifestar Helicopter



The Scheck Family is Recognized for the Million Dollar Achievement by the American Cancer Society





CORPORATE HEADQUARTERS:

500 East Plainfield Road
Countryside, IL
Phone: 708.482.8100

REGIONAL OFFICES:

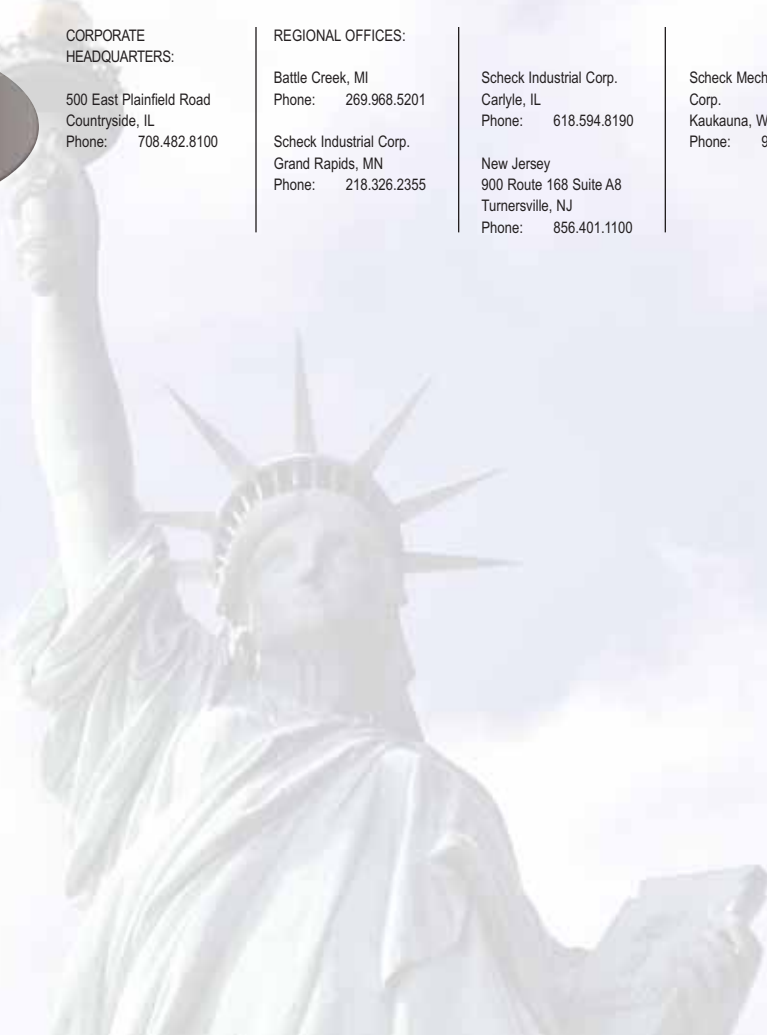
Battle Creek, MI
Phone: 269.968.5201

Scheck Industrial Corp.
Grand Rapids, MN
Phone: 218.326.2355

Scheck Industrial Corp.
Carlyle, IL
Phone: 618.594.8190

New Jersey
900 Route 168 Suite A8
Turnersville, NJ
Phone: 856.401.1100

Scheck Mechanical Wisconsin
Corp.
Kaukauna, WI
Phone: 920.759.2600



Scheck specializes in pipe fabrication & installation, boiler maintenance & repair, contract maintenance, HVAC & industrial refrigeration, resort & real estate development, and renewable fuel production. We serve the industrial power, new-generation, food & beverage, pharmaceutical, petroleum & refining, chemical, pulp & paper, health care, educational, institutional, renewable fuel, real estate and resort industries.



Scheck signs NASCAR's Clint Bowyer!
see article on page 14

Scheck RACING

A publication for customers, employees, and friends of Scheck.

Scheckscope